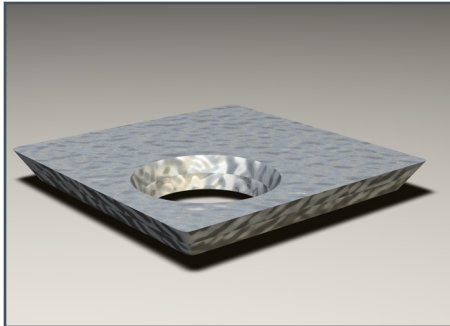


N-DUR™ COP

composite overlay plate



- UNSURPASSED ABRASION RESISTANCE.
- IMPACT RESISTANCE SUPERIOR TO CERAMIC.
- WITHSTANDS TEMPERATURES OF 900°F.
- EASILY INSTALLED.
- CORROSION RESISTANT.
- REDUCED HANDLING AND INVENTORY

N-DUR™ COP is an engineered composite overlay plate comprised of chrome, manganese, and vanadium in an iron base and metallurgical bonded to mild steel with a fusion process. The typical hardness of **N-DUR™ COP** is 62 Rockwell "C".

Suggested Applications:

Conveyor Wear Strips	Fan Liners	Replacement Liners
Cyclone Liner Plates	Mining Equipment	Truck Beds
Distributor Wear Plates	Piping	Wear Pads
Fan Blades	Reclaimer Buckets	Wear Plates

Available Forms: Standard form: **N-DUR™ COP** is available in Plate and Pipe.
Custom manufacturing: Available upon request.

Sizes: Standard Sheet: up to 84" width x up to 132" length
Custom widths and lengths available.

ASTM G65 Test Method

METHOD	DESCRIPTION
65A	ASTM G65-94, Procedure A - Standard test method for measuring abrasion using the dry sand/rubber wheel apparatus. Force of 30lbs and 6000 revolutions.

Sample Description: One **N-DUR™ COP** sample
Work Requested: "G65 Test"
Work Performed: Hard face surface milled to a smooth non pitted surface. Sample tested to ASTM G65

ASTM G65 Test Results

TEST	N-DUR™ COP	METHOD
Normalized Weight Loss	.127 mg	ASTM 65A

EMSCO[®]
ENGINEERED MATERIALS & SERVICES COMPANY, INC.
P.O. BOX 77538 • BATON ROUGE • LOUISIANA • 70879
225.755.0120 • 800.886.5900FAX • WWW.EMSCO.ORG

N-DUR™ COP
composite overlay plate

Services Available: Complete Engineering, Fabrication, and Installation.